

Two-color Panel Lights

Product Description

- Manufactured using "Sanan" LED chip
- Excellent Color Rendering Index, CRI (Ra) of more than 80
- Aluminum housing with good heat conduction
- Installation type: Recessed
- Color Temperature: Warm White and Blue



Product Details

Color	: WW/Blue
Voltage	: AC85-265V
Light Angel	: 120°
Power Factor	: ≥0.6 / ≥0.9
Using Temperature	: -20°C-50°C
Wattage	: 6/10/14W

Spiral Shape LED Energy Saving Lamp

Product Description

- Manufactured using world's best LED chip "Sanan"
- Excellent Color Rendering Index, CRI (Ra) of more than 80
- Color Temperature: Cool White and Warm White

Product Details

Color	: CW/WW
Voltage	: AC85-265V
Light Angel	: 360°
Power Factor	: ≥0.6 / ≥0.9
Power Efficiency	: ≥88%
Using Temperature	: -20°C-50°C
Base	: E27/B22
Wattage	: 5/7/9/12/16 /20/24/30W

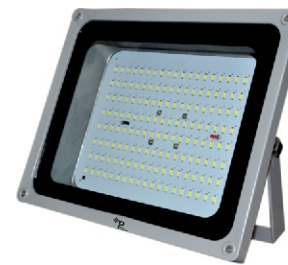
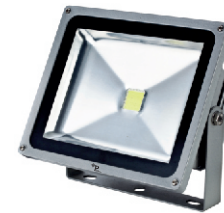


- Also available in 'U' Type

Flood Light (IP-65)

Product Description

- Manufactured using "Sanan" LED chip
- Excellent Color Rendering Index, CRI (Ra) of more than 70
- Aluminum housing with good heat conduction
- Installation type: Recessed
- Color Temperature: Cool White and Warm White



Product Details

Color	: CW/WW
Voltage	: AC85-265V
Power Factor	: ≥0.92
Power Efficiency	: ≥80%
Using Temperature	: -20°C-50°C
Wattage	: 30/40/50/60/70 /100/120/150/200W

LED Street Light (IP-65)

Product Description

- Manufactured using world's best LED chip "Nichia" form Japan
- Excellent Color Rendering Index, CRI (Ra) of more than 70
- Aluminum housing with good heat conduction
- Installation type: Recessed
- Color Temperature: Cool White and Warm White
- Also available in dimmable option

Product Details

Color	: CW/WW
Voltage	: AC90-300V
Light Angel	: 100°
Power Factor	: ≥0.92
Power Efficiency	: ≥88%
All ratings are available	



TP Impex Limited stands for Total Perfection. A noted name in the arena of power products with a credible background of hands on experience, qualitative workmanship and precise marketing insights.

Complimented by a proven lineage and a well oiled distribution network, TP is making huge strides in the world of LED lights armed with a wide range backed with technological precision and global standards.

TP LED excellence is spanning across varied indoor & outdoor lighting horizons with commendable elan.

TP LED lights are ideal for

Homes • Hotels • Restaurants • Meeting rooms • Showrooms
• Supermarkets • Stores • Public Places • Industries • Offices • Parking Areas • Hospitals • Schools • Colleges • Hostels

Every TP LED light comes to you after duly checked and certified by world's most renowned and reputed certification authorities designated to ensure that most demanding quality parameters are followed and respected all over the world.

We offer innovative, cost saving and eco friendly products for an energy efficient future of the mankind and our planet.

Marketed by:
TP IMPEX LIMITED

An ISO 9002 Company

28/6/5, First Floor, Near MC Primary School, Badli
(Near Rohini Sector 18 Metro Station) New Delhi 110042

Ph.: +91 9873400338, 39 | E-mail: info@tpil.in | www.tpil.in



WELCOME TO THE
BEAUTIFUL WORLD OF
TP LED LIGHTS

Panel Light (EDGE LIT / BACKLIT)

Product Description

- Manufactured using world's best LED chip "Sanan"
- Aluminum frame with good heat conduction
- Excellent Color Rendering Index, CRI (Ra) of more than 80
- High Quality LGP
- Installation type: Recessed



Product Details

Color	: WW/CW/NW
Color Temperature	: 3000-6500K
Voltage	: 85-265V
Light Angle	: 120°
Power Factor	: ≥0.6 / ≥0.9
Using Temperature	: -20°C-50°C
Wattage	: 3/6/12/18/24W



Ultra Slim Panel

Product Description

- Easy to install using clamps in a false ceiling or can be hanged using wire suspenders
- Color choice of silver finish or white powder coated
- High quality of LGP, heavy Aluminium frame
- High Power factor drivers used for a great energy saving and uninterrupted usage for up to 50,000 hours
- Highly recommended for conference rooms and offices



Product Details

Color	: WW/CW/NW
Color Temperature	: 3000-6000K
Voltage	: 85-265V
Light Angle	: 120°
Power Factor	: ≥0.6 / ≥0.9
Using Temperature	: -20°C-50°C
Wattage / Size	: 2'x2', 4'x1' 42W 56W



LED Bulb Lamps

Product Description

- Lumen output, 90-110 lm/W
- High PF Tested
- Wide Voltage Range to suit all conditions
- Aluminium heat sink inside & PBT outside
- High surge protection upto 2.5KVA
- Short circuit protection
- Open LED protection



Product Details

Color	: CW/NW/WW
Input	: AC 85-285V
Power Factor	: ≥0.9
Light Angle	: 260°
Base Holder	: B22/E27
Life up to	: 50000 Hrs
Wattage	: 3/5/7/9/12/15W



- 0.5W bulb available in many colors

Surface Mounted Panel Light

Product Description

- The Product is used as surface mounted where there is no option of false ceiling.
- Using high quality LED Chip from Sanan as light source with good heat sink of Aluminium for better heat dissipation.
- High quality LGP panel for uniform spread of light without any dark spots.



Product Details

Color	: WW/CW/NW
Color Temperature	: 3000-6500K
Voltage	: 85-265V
Light Angle	: 120°
Power Factor	: ≥0.6 / ≥0.9
Using Temperature	: -20°C-50°C
Wattage	: 3/6/12/18/24W

Suitable for

House, exhibition hall, hotel, corridor, storage space, shopping center, shop etc.



Tube Light

Product Description

- Integrating many LED light sources forming a row combination.
- High efficiency energy saving with 90% by being compared with incandescent bulb and 60% by fluorescent light.
- Green and environmental without ultraviolet rays, infrared rays, heat radiation and mercury pollution.
- As cold light source, the object will not fade due to radiation of LED lights.
- Quick illumination. No strobe and with little glare. It will reach the full luminous flux output shortly after being lighted up.
- Being a directional light, good for improving efficiency of lighting system.
- High surge protection upto 2.5KVA
- Short circuit protection
- Open LED protection



Product Details

T5 & T8 Integrated & Retro	Color	: 3000K/4000K/6000K
	Ra	: ≥80%
	Voltage	: AC85-265V / 50/60Hz
	Power Factor	: ≥0.9
	Wattage	: 9/18/20/24W

LED Flexible Strip Light

Product Description

- Super flexible and easy curved white PCB board
- Super bright 5050 LEDs are adopted
- 5 Metre reel
- Cut out available after every 3 LEDs in 30W and 6 LEDs in 60W ribbon for length adjustment
- Multi-color jumping, gradual color changing, etc can be done using controller
- Color Temperature: RGB - Multiple color changing modes using controller
- Dimmable option available
- Waterproof model available with Ip65 protection



Product Details

Voltage	: DC 12V
Outside diameter	: 1000x12x2mm
Light Angle	: 120°
Using Temperature	: -20°C-50°C
LED Color	: R/Y/B/G/W/WW/RGB
Protective Treatment	: Silicon sleeve, Glue Drop, Glue Sealed or other type
Package	: Aluminium foil, Antistatic bag

Panel Light Dimmable

Product Description

- Dimmer mode can be adjust the brightness and colour from 0% to 100%.
- The dimmer has a memory feature. The brightness or color will revert to the condition before power off when the power restart.
- Dimmer remote can control one or more lamps at the same time, ensuring the brightness control in one space or multiple spaces.
- The dimmable light need not any special wiring.



Product Details

Voltage	: AC85-265V
Light Angel	: 120°
Power Factor	: ≥0.6
Using Temp.	: -20°C-50°C
Colour	: 3200-6500K
Wattage	: 6/12/18/24W

- Remote required for dimming

COB Down Light

Product Description

- Manufactured using world's best LED chip "Sanan"
- Excellent Color Rendering Index, CRI (Ra) of more than 80
- Aluminum housing with good heat conduction
- Installation type: Recessed
- Color Temperature: Cool White and Warm White
- Also available in dimmable option



Product Details

Color	: CW/WW
Voltage	: AC85-265V
Light Angel	: 180°
Power Factor	: ≥0.6 / ≥0.9
Power Efficiency	: ≥88%
Using Temperature	: -20°C-50°C
Wattage	: 5/7/10/15/20/30W

